

UNDER 18 INDIVIDUAL ENGLISH + ACTIVITIES INTAKE 2025

Your journey awaits beyond the horizon

prepared by Kathy Pham-Group Coordinator

CROWN
INSTITUTE OF STUDIES
AUCKLAND • NEW ZEALAND



Our Vision

To be the preferred tertiary provider that develops agile, passionate and resilient industry professionals

Our Mission

Unlocking potential through an inclusive, supportive and respectful learning environment.



Auckland

The City of Sails

Auckland is New Zealand's biggest city and it offers a great balance of nature and city life.

Auckland was ranked top 10 for quality of living amongst English-Speaking countries
(*EIU, 2023*)

Top 10 city to travel to in 2022
(*Lonely Planet, 2022*)



**Population of
1.7 million**

**1 in 3
Aucklanders
were born
outside of NZ**

**10th most
livable city
in the world**

**In 2017,
became
UNESCO
city of Music**

**Top
destination to
visit**

**200+ ethnic
communities
call Auckland
home**



Who are we?

- 2022 marks our 50th Anniversary!
- Crown Institute of Studies began as Crown English, PTE in 1972.
- We later acquired Gillian Inglis Business College and rebranded as Crown Institute of Studies.
- 2024 Crown is moving to a new model: Welcoming the Young International Learners.

WHY CROWN?

WE CARE TIAKI TĀTOU

The team at Crown cares about each student who studies with us. Students have told us Crown is their “happy place”. We aim for that to be your experience too. Extra academic support and pastoral care are readily available – we listen, we support, and we guide.

WE TRAIN WHAKAAKO TĀTOU

Located in the heart of Auckland City, Crown is a caring, student-focused tertiary institution. We focus on providing industry relevant courses and getting students ready for the “real world”. We are passionate about holistic learning; this means that we want to develop you not only academically, but also personally, so that you are ready to contribute, excel and progress in your study pathway.

WE CONNECT HONO TĀTOU

Crown has great connections with premium quality and reputable industry partners. Throughout your course we will connect you with some of these great partners – at site visits, familiarisation tours (famils), and inviting Guest Speaker for a reality work interview.

OUR PROGRAM

Welcome to our Under 18 General English Programme, where you'll engage in 5 lessons per week facilitated by our teachers. Our instructors are not only highly qualified in language teaching but also bring rich experience to the classroom.

In our programme, each class maintains a cozy environment with a maximum of 16 students, all placed according to their proficiency level determined by an entrance test. This ensures an optimal learning experience tailored to your specific needs and abilities.

Whether you're a beginner, intermediate, or advanced learner, rest assured that our curriculum will align with your level of proficiency and guide you toward your language goals. We focus carefully on skills that can help you improve your English, such as: Reading, Speaking, Writing and Listening.

You will witness tangible progress in your English proficiency throughout the programme. Our Team is here to support and empower you every step of the way.



Our Location

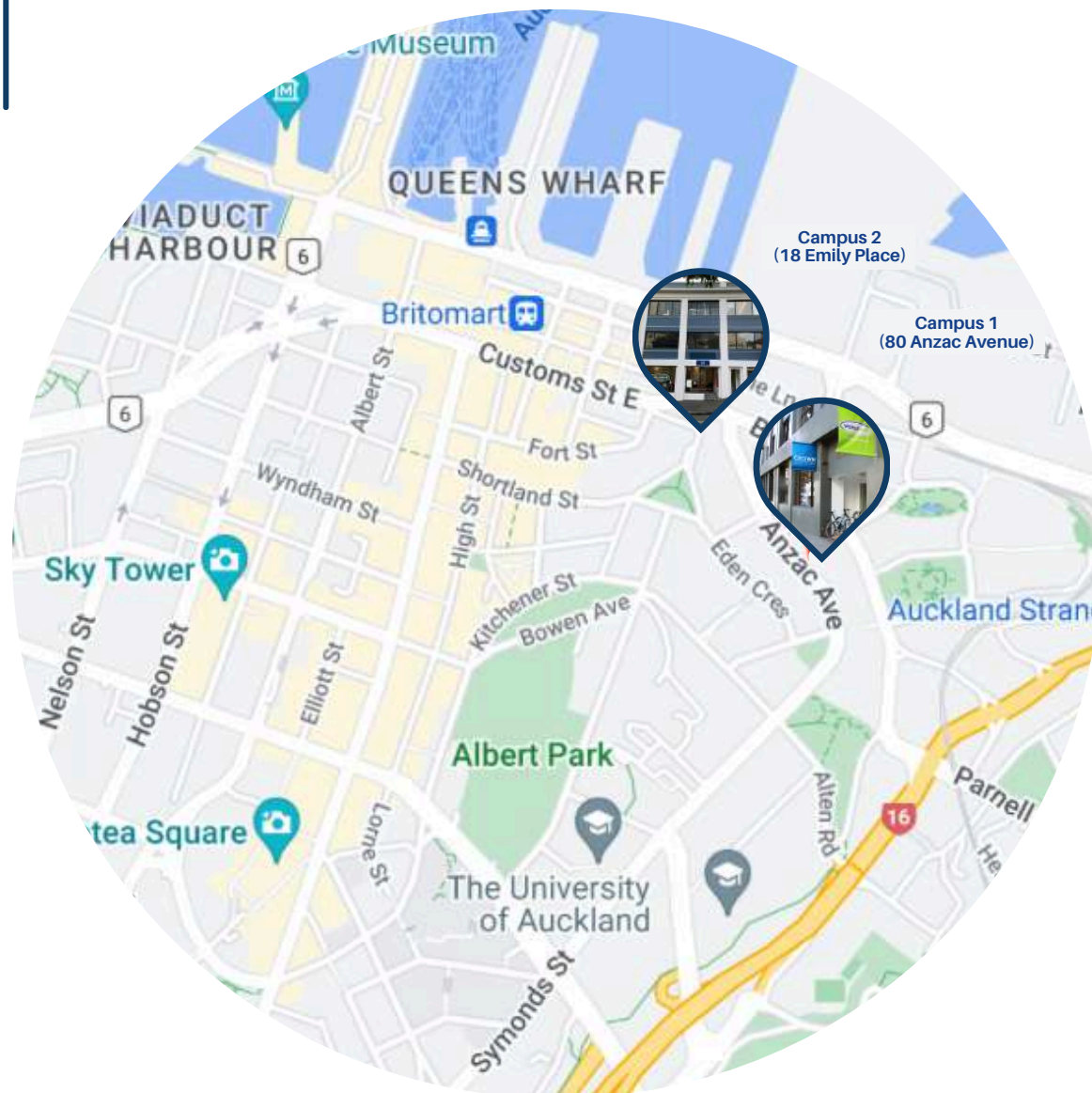


We are located in the heart of Auckland CBD, the Britomart train station and major bus stops are all within walking distance.

There are many restaurants, cafes, shops, bars, movie theatres as well as 2 Universities and other tertiary institutions near Worldwide School & Crown.

A short walk away:

- 10 min. to Britomart train station
- 2 min. to the closest bus stop
- 5 min. to a supermarket and shopping areas
- 18 min. to Auckland Sky Tower



WORLDWIDE AND CROWN

Campus 1: 80 Anzac Avenue

Campus 2: 18 Emily Place

Auckland Central - New Zealand



Services & Facilities

There are a lot of facilities and services offered at Crown Institute and Worldwide School of English



Social Programmes



Health and Wellbeing Centre



Student Support



Cafe



Student Help Centre



School Entrance



Student Cafe & Lounge



Our training Facilities



Hotel Training Reception



Hotel Room Space



Air Plane Cabin



School Library



Reading Corner



Computer Lab



Accommodation Homestay

Embark on a heartwarming journey with our homestay option, where you'll become part of a local family's life. It's not just about accommodation—it's about sharing meals, laughter, and stories, immersing yourself in their traditions and lifestyle.

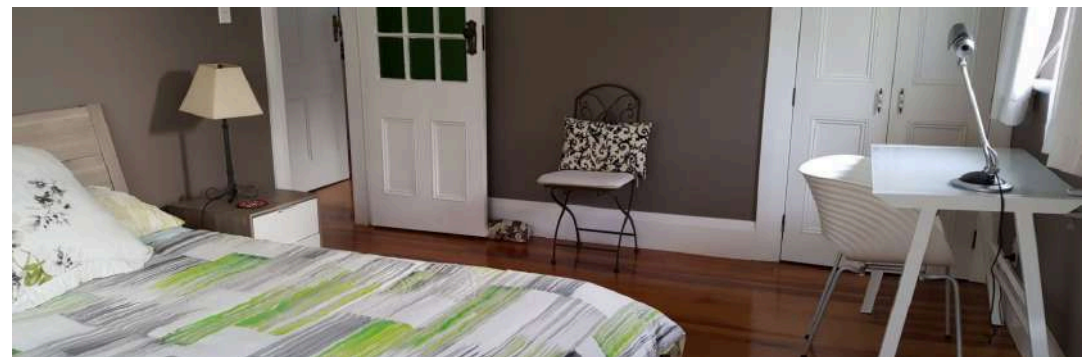
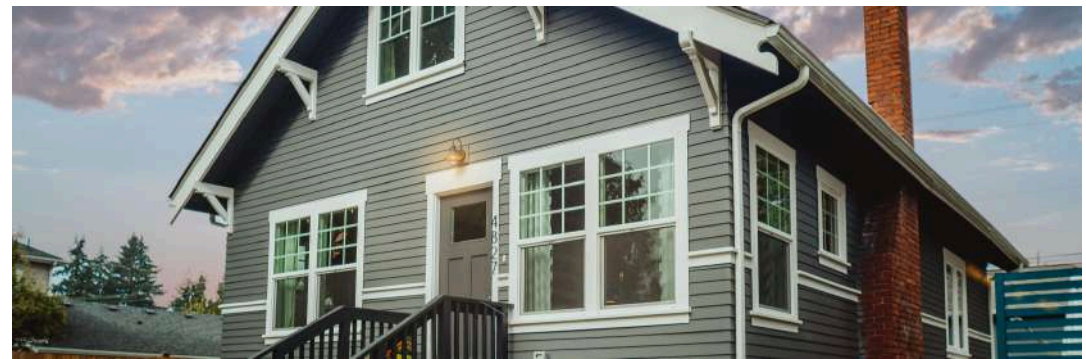
Your homestay family will eagerly welcome you into their home, guiding you through your first day at school and unveiling the secrets of Auckland's charm.

Get ready for an unforgettable experience where every day feels like an exciting adventure in "Kiwi Culture".

All of our families live close to a bus stop and other conveniences and are on average between 45-60 minutes away by bus.

All students in homestays have their own bedroom with bed, study desk with light and chair in the room.

**The images are for illustrative purposes only.*





2025 Intake Calendar

COURSE	DATES	DATES	DATES	DATES	DATES
BEGINNER FULL - TIME	13 January - 7 February	3 March - 28 March	23 June - 11 July	14 July - 1 August	4 August - 22 August
PRE-INTERMEDIATE FULL - TIME	13 January - 7 February	3 March - 28 March	16 June - 11 July	14 July - 1 August	4 August - 22 August
INTERMEDIATE FULL - TIME	13 January - 7 February	3 March - 28 March	16 June - 11 July	14 July - 1 August	4 August - 22 August

****Kindly note that all the intake dates we offer are dependent on availability and may be subject to change at any time due to unforeseen circumstances. We deeply appreciate your understanding and cooperation in such situations, and we assure you that we will do our best to provide suitable alternatives whenever necessary. Please remember that there is no school on public holidays/weekends.**



Class Timetable Example

Monday - Friday	Class	9:00-10:00
	Break	10:00-10:10
	Class	10:10-11:10
	Break	11:10-11:20
	Class	11:20-12:20
	Lunch	12:20-1:00
	Afternoon Excursions	1:00PM - 3:00PM

**Kindly note that all the activities we offer are dependent on availability and may be subject to change at any time due to unpredictable weather conditions or other unforeseen circumstances, such as the availability of the guest speaker. We deeply appreciate your understanding and cooperation in such situations, and we assure you that we will do our best to provide suitable alternatives whenever necessary.



Afternoon Activities



Social Programmes - Bridge walk



Yoga Workshop



Afterclass Activities



Kelly Tarltons Aquarium



Rock Climbing



Sports Activities



Sailing and Maritime Museum



Auckland Domain Garden



WETA Workshop

**Kindly note that all the activities we offer are dependent on availability and may be subject to change at any time due to unpredictable weather conditions or other unforeseen circumstances, such as the availability of the guest speaker. We deeply appreciate your understanding and cooperation in such situations, and we assure you that we will do our best to provide suitable alternatives whenever necessary.



Afternoon Class Schedule Example

Monday City Tour 	Tuesday Auckland War Museum 	Wednesday School Visit 	Thursday Sky Tower 	Friday Shopping Mall 	Saturday/Sunday Free Time with Homestay 
Monday Bowling 	Tuesday Mocktail Workshop 	Wednesday Mount Eden Walk 	Thursday Mini Golf 	Friday Auckland Zoo 	Saturday/Sunday Free Time with Homestay 
Monday Winter Garden 	Tuesday Rock Climbing 	Wednesday Mission Bay Beach 	Thursday Ice Cream Factory 	Friday Sailing + Maritime Museum 	Saturday/Sunday Free Time with Homestay 
Monday Art Gallery 	Tuesday Ferry to Devonport 	Wednesday WETA Workshop 	Thursday Laser Tag Arcade games 	Friday Graduation Free afternoon time 	Saturday/Sunday End of Tour Depart New Zealand 

****Kindly note that all the activities we offer are dependent on availability and may be subject to change at any time due to unpredictable weather conditions or other unforeseen circumstances. We deeply appreciate your understanding and cooperation in such situations, and we assure you that we will do our best to provide suitable alternatives whenever necessary.**

HOW TO REGISTER

Conditions for participation:

- Students aged 14 to 17 years old.
- Good health to participate in program activities.
- Will need to complete an English Pre-test and a Zoom Meeting interview 4 weeks before arrival.
- Minimum of 2 weeks study required.

Check out the last slide to see contact details

STUDENT SUPPORT

First Language Support:

Feel at home with our caring Student Services team, fluent in a variety of languages. From navigating daily life in NZ to addressing any concerns you may have, we're here to support you with warmth and understanding.

Internet / Wifi / Phones:

Stay connected with FREE Internet and Wifi available at our schools. Let Crown arrange reasonably priced SIM cards, and international calling cards, ensuring you're always connected with your loved ones back home.

Public Transport Pass / Student ID:

Get ready to explore with ease! Upon arrival at Crown, receive your Student ID card, unlocking exclusive discounts. Plus, let us guide you to the most affordable way to purchase your public transport pass, making travel around the city a breeze.

Study Materials:

Empower your learning journey with access to a wealth of study materials available during school hours. From interactive exercises to comprehensive resources in the library, we're dedicated to providing you with the tools you need to succeed.

Our Partners



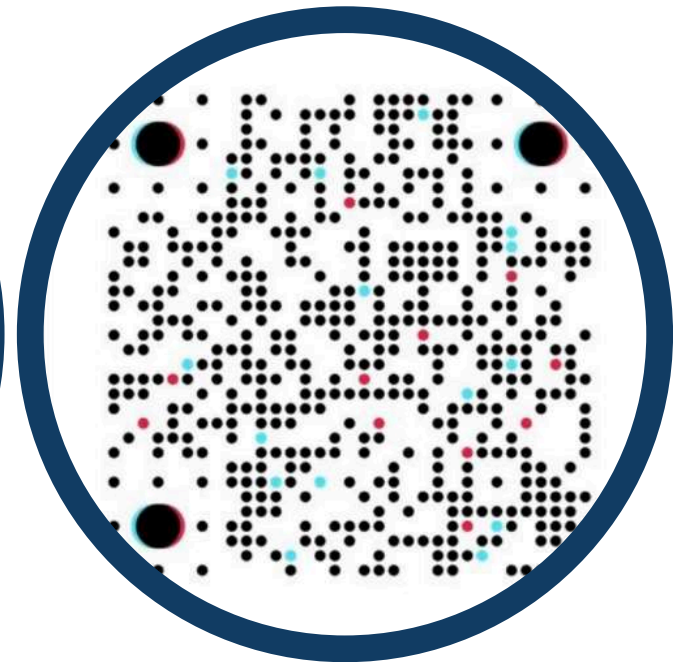
FOLLOW US ON SOCIAL MEDIA



Facebook.com/CrownInstitute/



instagram.com/crowninstitute/



Tiktok : Crowninstiuteofstudies



Keep in touch

 **80 Anzac Avenue, Auckland 1010, New Zealand**

 **info@crown.ac.nz**

 **+64 (0) 9 357 3161**

 **@crowninstitute**

 **fb.com/crowninstitute**

 **www.crown.ac.nz**

CROWN
INSTITUTE OF STUDIES
AUCKLAND • NEW ZEALAND

